

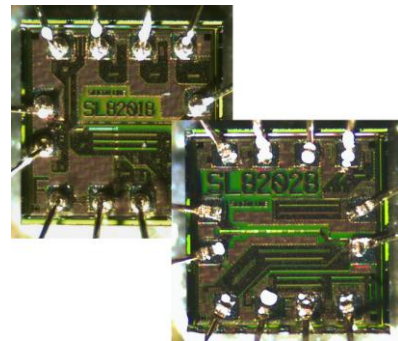


Silicon Line Introduces the World's Most Power Efficient PHY Layer ICs for Optical Links in Mobile and Consumer Products at OFCNFOEC 2012

ICs enable 3, 6 and 12.5 Gbps optical data transmission at 3.3 pJ per bit

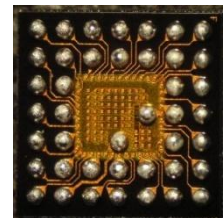
SL82028/SL82018 – Ultra-low Power (under 14mW) 6 Gbps VCSEL Driver / TIA Chipset

- Data rate support up to 6 Gbps
- Power consumption of the VCSEL driver below 2 mW
- Power consumption of the transimpedance amplifier below 12 mW
- The VCSEL driver includes automatic temperature compensation, alignment, burn-in and diagnostic modes
- The transimpedance amplifier is suitable for GaAs and Si photodiodes
- Standard CMOS technology
- Small in size and footprint
- Ideal for embedded DisplayPort applications in Notebooks and Ultrabooks



SL83215/SL83115 – High Speed D-PHY Optical Bridge ICs for Smart Phone/Tablet Applications

- Ultra-low power Serializer (SL83215) / De-Serializer (SL83115) enables implementation of an optical MIPI D-PHY interface
- Supports the latest generation of high resolution "retina" type displays and cameras
- CSI-1, CSI-2 and DSI protocols
- Up to 4 data lanes at up to 2 Gbps per lane
- Standard CMOS technology
- Small in size and footprint
- Forms a complete optical link when used together with the SL82028 VCSEL driver and the SL82018 transimpedance amplifier
- Ideal for smart phone and tablet applications



Silicon Line will be exhibiting at the OFCNFOEC, held at the Los Angeles Convention Center, from March 6th to April 8th in the USA. To learn more about products from Silicon Line, please visit us at booth number #1551. Our full product range includes ICs for smart phones, tablets, notebooks, ultrabooks, digital still cameras, digital video cameras, active optical cables, industrial and medical applications.

About Silicon Line GmbH

Silicon Line is a fabless analog IC company designing and providing physical layer technologies that enable ultra-low power, low cost optical links at multi-gigabit rates for mobile and consumer platforms. Silicon Line is located at Elsenheimerstrasse 48, D-80687 Munich, Germany.

Additional information is available at www.silicon-line.com

Email: sales@silicon-line.com